

MATERIALS AND FINISHES

J BODY, RING BRASS  
PLATED SEE TABLE

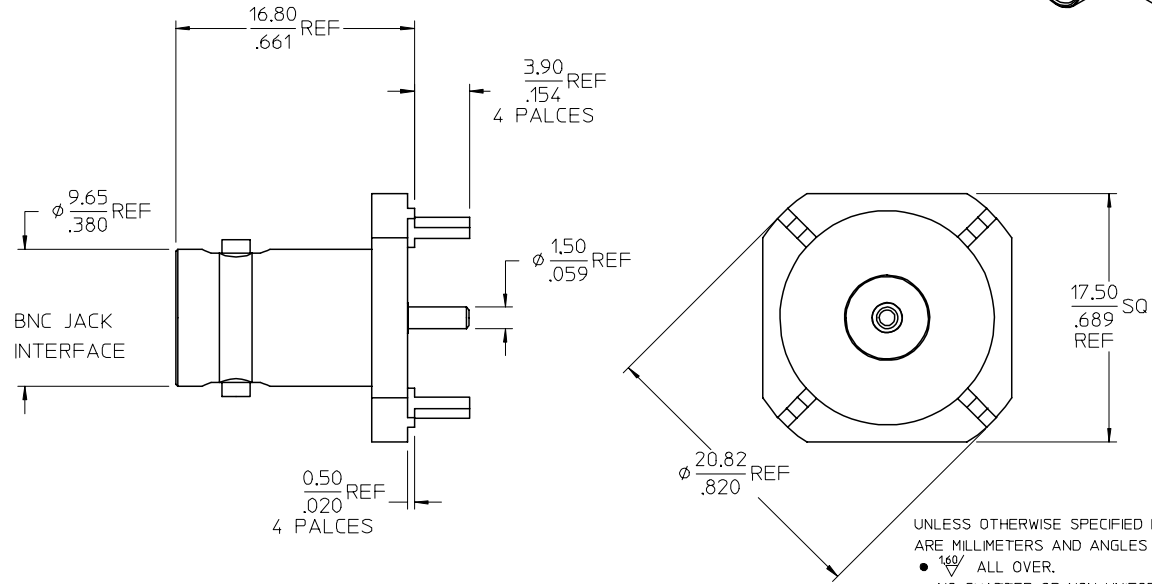
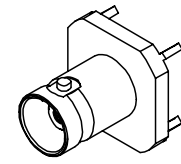
I CENTER CONTACT PHOSPHOR BRONZE  
PLATED SEE TABLE

H INSULATOR TEFLON

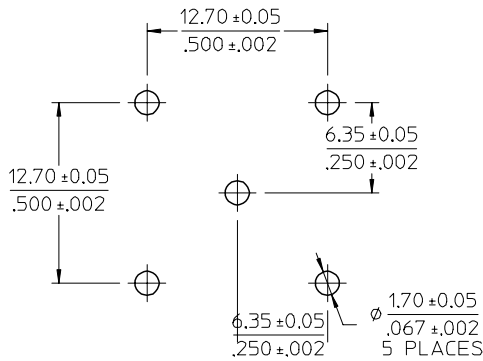
CHARACTERISTICS:

A. ELECTRICAL - IMPEDANCE: 50 OHM  
FREQUENCY RANGE: 4 GHz  
TYPICAL VSWR: 1.30 UP TO 4 GHz  
PROOF VOLTAGE: 2000 VOLTS  
WORKING VOLTAGE: 500 VOLTS

B. ENVIRONMENTAL - -55° TO +155° C



- UNLESS OTHERWISE SPECIFIED DIMS ARE MILLIMETERS AND ANGLES ARE DEGREES.
- ~~16~~ ALL OVER.
  - NO CHATTER OR NON-UNIFORM SURFACE FINISH ALLOWED.
  - PARTS TO BE FREE OF BURRS & SHARP EDGES 0.13(.005) MAX BREAK.
  - EXTERNAL THREADS TO BE ROLLED OR SINGLE POINT.
  - DIAMETERS TO BE CONCENTRIC WITHIN 0.08(.003) TIR.



73133-5005	BODY: SILVER(200 MICROINCHES MIN)/CONTACT: SILVER(200 MICROINCHES MIN)
73133-5003	BODY: NICKEL(70 MICROINCHES MIN)/CONTACT: GOLD(10 MICROINCHES MIN)
73133-5001	BODY: NICKEL(70 MICROINCHES MIN)/CONTACT: SILVER(200 MICROINCHES MIN)

MIL-STD-348A, FIG. 301.2	INTERFACE
SPECIFICATION	DESCRIPTION

PART NO.	PLATING
----------	---------

CHG: REDREW IN SD CHANGED ALL DIMS FROM IN/MM TO MM/IN ADDED PLATING THICKNESSES ADDED INTERFACE SPEC TABLE ADDED DIM $\phi$ 1.50 REF EC NO: URF2005-0716 DRWN: FLAHERT 2004/10/08 CHKD: SHAH 2004/10/08 APPR: WILNER 2004/10/08	QUALITY SYMBOLS 	GENERAL TOLERANCES (UNLESS SPECIFIED)		DIMENSION STYLE MM/IN		SCALE	DESIGN UNITS METRIC	THIRD ANGLE PROJECTION															
		<table border="1"> <tr> <th></th> <th>mm</th> <th>INCH</th> </tr> <tr> <td>4 PLACES</td> <td>± ---</td> <td>± ---</td> </tr> <tr> <td>3 PLACES</td> <td>± ---</td> <td>± ---</td> </tr> <tr> <td>2 PLACES</td> <td>± ---</td> <td>± ---</td> </tr> <tr> <td>1 PLACE</td> <td>± ---</td> <td>± ---</td> </tr> </table>			mm	INCH	4 PLACES	± ---	± ---	3 PLACES	± ---	± ---	2 PLACES	± ---	± ---	1 PLACE	± ---	± ---	DRAWN BY DATE		TITLE	BNC VERTICAL PCB RECEPTACLE, 50 OHMS EWR-2604 BNC-J/PCB MOLEX INCORPORATED	
			mm	INCH																			
		4 PLACES	± ---	± ---																			
3 PLACES	± ---	± ---																					
2 PLACES	± ---	± ---																					
1 PLACE	± ---	± ---																					
ANGULAR ± 2°		CHECKED BY DATE																					
DRAFT WHERE APPLICABLE MUST REMAIN WITHIN DIMENSIONS		APPROVED BY DATE																					
		MATERIAL NO. SEE TABLE		DOCUMENT NO. SD-73133-500		SHEET NO. 1 OF 1																	